



EST. 1897



We are a long-established independent Funeral Directors and Memorial Masons providing a high level of professional expertise, care and compassion in your time of need. For funerals large or small, we can advise and assist in the organisation of the service for either cremation or burial to best meet the wishes of the family and loved ones.

We offer an exceptional level of service and facilities where our experienced staff are always ready to help and advise you 24 hours a day. Our offices cover an area from South West London, Surrey, Hampshire, Berkshire and West Sussex . We own an extensive fleet of modern Jaguar & Bentley funeral hearses, limousines and supporting vehicles, and despite being one of the largest organisations in the home counties, pride ourselves on delivering a personalised, local service.



OUR NETWORK

ALDERSHOT

FORD MEARS & PARTNERS

67 Grosvenor Road, Aldershot
Hampshire, GU11 3DZ

01252 319457

aldershot@fordmears.uk

www.fordmears.uk

ALTON

CHARLES READ & DAUGHTER

11-13 Turk Street, Alton
Hampshire GU34 1AG

01420 83551

alton@charlesreaddaughter.uk

www.charlesreaddaughter.uk

ASHFORD

HOLMES & DAUGHTERS

3 Church Road, Ashford
Middlesex, TW15 2UG

01784 421015

ashford@holmesdaughters.uk

www.holmesdaughters.uk

CHERTSEY

P BOAST & SON

36 Eastworth Road, Chertsey
Surrey, KT16 8DW

01932 563238

chertsey@pboastson.uk

www.pboastson.uk

CROWTHORNE

BRIAN BENTLEY FUNERALS

27 Greenwood Rd, Crowthorne
RG45 6QX

01344 772773

crowthorne@brianbentleyfunerals.uk

www.brianbentleyfunerals.uk

EAST SHEEN

HOLMES & DAUGHTERS

461 Upper Richmond Road West
East Sheen, SW14 7PU

0208 392 1012

eastsheen@holmesdaughters.uk

www.holmesdaughters.uk

EGHAM

EGHAM & HYTHE

92-93 High Street, Egham
Surrey, TW20 9HF

01784 479310

egham@eghamhythe.uk

www.eghamhythe.uk

FARNBOROUGH

FORD MEARS & PARTNERS

242 Farnborough Road,
Hampshire, GU14 7JW

01252 549335

farnborough@fordmears.uk

www.fordmears.uk

FELTHAM

HOLMES & DAUGHTERS

4 Cavendish Terrace, High Street
Feltham, Middlesex, TW13 4HE

0208 893 1860

feltham@holmesdaughters.uk

www.holmesdaughters.uk

FLEET

A & W GODDARD

Kent Road, Fleet
Hampshire, GU51 3AJ

01252 616431

fleet@awgoddard.uk

www.awgoddard.uk

FRIMLEY

FORD MEARS & PARTNERS

26 Frimley High Street
Surrey, GU16 7JD

01276 25563

frimley@fordmears.uk

www.fordmears.uk



GODALMING

MULLARDS FUNERALS

121-123 High Street, Godalming
Surrey, GU7 1AQ
01483 860279
godalming@mullards.uk
www.mullards.uk

GRAYSHOTT

GOULD & CHAPMAN

Avenue House, Headley Road
Grayshott, Surrey, GU26 6TZ
01428 604436
grayshott@gouldchapman.uk
www.gouldchapman.uk

HASLEMERE

G M LUFF & PARTNERS

84 Lion Lane, Haslemere
Surrey, GU27 1JH
01428 643524
haslemere@gmluff.uk
www.gmluff.uk

HORNDEAN

MICHAEL MILLER & PARTNERS

113 London Road, Horndean
Hampshire, PO8 0BJ
02392 593088
horndean@michaelmiller.co.uk
www.michaelmiller.co.uk

MIDHURST

ROGER POAT & PARTNERS

Duck Lane, Midhurst, West Sussex
GU29 9DE
01730 812094
midhurst@rogerpoat.co.uk
www.rogerpoat.uk

PETERSFIELD

MICHAEL MILLER & PARTNERS

27a High Street, Petersfield
Hampshire, GU32 3JR
01730 233244
petersfield@michaelmiller.co.uk
www.michaelmiller.co.uk

TEDDINGTON

HOLMES & DAUGHTERS

161 High Street, Teddington
Middlesex, TW11 8HH
0208 977 9532
teddington@holmesdaughters.uk
www.holmesdaughters.uk

WOKING, KNAPHILL

FORD MEARS & PARTNERS

9 Creswell Corner, Anchor Hill
Knaphill, Surrey, GU21 2JD
01483 480181
knaphill@fordmears.uk
www.fordmears.uk

YATELEY

FORD MEARS & PARTNERS

113 Reading Road, Yateley
Hampshire, GU46 7LR
01252 560920
yateley@fordmears.uk
www.fordmears.uk

CONTENTS

ABOUT US	p. 01-02
OUR HISTORY TIMELINE	p. 03-04
WHEN DEATH OCCURS	p. 05-07
AT A HOME	p. 08
AT A NURSING HOME	p. 09
AT HOSPITAL	p. 10
SUDDEN DEATH & CORONER	p. 11-12
REGISTRATION	p. 13-14
REGISTRATION INVOLVING THE CORONER	p. 15-16
FUNERALS	p. 17-18
ARRANGING A FUNERAL	p. 19-20
FUNERAL CHARGES	p. 21-26
GREEN FUNERALS	p. 27-28
FINANCIAL ASSISTANCE	p. 29-30
PRE-PAID FUNERAL PLANS	P. 31-32
MEMORIALS	P. 33-34
USEFUL CONTACTS	P. 35-36
NOTES	P. 37





ABOUT US

Ford Mears can trace its industry heritage all the way back to the start of E Finch & Son in 1857 which was John Ford's family business. G M Luff, founded in 1897 by Thomas Marshall Luff, was Ford Mears' first acquisition in 1986, and served the local Haslemere community and its surrounding villages at a time of horse-drawn hearses. Building on our heritage, today we're proud to provide a caring and professional service from South West London, Surrey, Hampshire, Berkshire and West Sussex with our extensive fleet of modern Jaguar and Bentley funeral vehicles.



Since 1986, our Directors have grown the company by acquiring a number of fellow independent funeral directors. This has enabled us to grow our successful business, whilst still maintaining the personalised professional service provided to local communities by our predecessors and their families to the highest standards.

Our success derives from the commitment of our Directors John Ford and Tony Mears, who grew the company from a single office back in 1986 to several offices today. John is the 4th generation of an independent family-run Funeral Directors, and Tony Mears joined the industry at the tender age of 15. John and Tony started working together in 1974, when Tony joined John's family business, E Finch & Sons, and 14 years later they identified an opportunity to establish a larger independent business together.

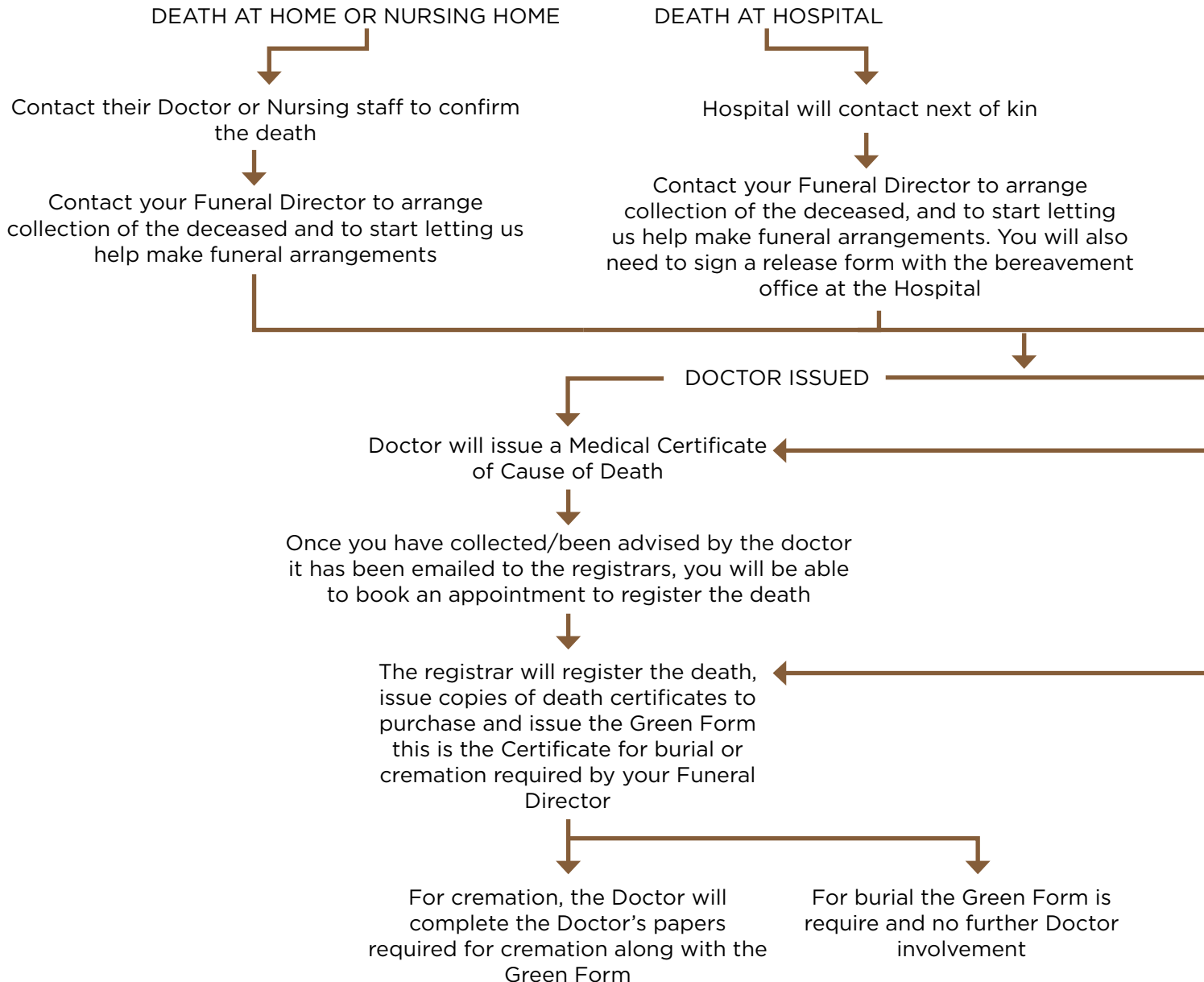


OUR HISTORY TIMELINE

1811	Mullard Funerals of Godalming founded
1857	E Finch & Son of Aldershot founded by John Ford's great-great-Uncle
1896	A & W Goddard of Fleet founded by Arthur and William Goddard
1897	G M Luff of Haslemere founded by Thomas Marshall Luff
1904	P Boast & Son founded by Peter Boast (Matthew Boast's great-grandfather)
1941	Gould & Chapman of Grayshott founded
1965	Tony Mears joins Frederick W Paine of Kingston-upon-Thames (aged 15)
1967	Tony Mears joins Walter Lock & Sons of Ashford
1972	John Ford joins E Finch & Sons of Aldershot
1973	Charles Read establishes Charles Read & Daughters of Alton (supported by E Finch & Sons)
1974	Tony Mears joins E Finch & Sons of Aldershot (starts working with John Ford)
1986	G M Luff & Partners of Haslemere was acquired
1987	G M Luff & Partners acquired Gould & Chapman of Grayshott
1987	G M Luff & Partners opened an office in Aldershot
1988	E Finch & Son sold to the Great Southern Group
1989	John Ford and Tony Mears partnered with G M Luff, forming G M Luff & Partners (the Company) as it is known today
1989	The Company acquired A & W Goddard of Fleet
1989	G M Luff & Partners of Aldershot was re-named Ford Mears & Partners
1990	The Company acquired Charles Read & Daughter of Alton
1990	Janet Ford (John's wife) joined the Company
1990	The Company opened a new office Ford Mears & Partners in Frimley
1990	Evelyn Woodison and Ian Glazier opened Egham & Hythe Funeral Directors
1991	Sian Mears (Tony's wife) joined the Company
1992	The Company of Godalming was opened
1993	Brothers Andrew, David and later John Holmes established Holmes & Daughters of Ashford
1994	Holmes & Daughters of Feltham was opened
1995	Holmes & Daughters of Teddington was opened
1996	Holmes & Daughters of East Sheen was opened
1997	The Company acquired Mullard Funerals of Godalming (also incorporating A J Tracy

	Funerals of Elstead), then combining G M Luff & Partners of Godalming with Mullards Funerals under the Mullard Funerals name
1997	Brian & Caroline Bentley established Brian Bentley Funeral Service of Crowthorne
1997	The Company acquired Egham & Hythe. Founder Ian Glazier & Evelyn Woodison stayed with the business
1998	The Company opened a new office Ford Mears & Partners in Farnborough
1998	The Company acquired P Boast & Son of Chertsey from Peter Boast upon his retirement until his death. His Son Matthew has stayed with Ford Mears ever since
2000	The Company acquired the four Holmes & Daughters offices. John Holmes joined the Board of Directors
2001	The Company opened a new office Ford Mears & Partners in Knaphill
2003	Michael Miller & Partners of Petersfield opened by Michael Miller with the support of his then partners
2003	John's son Simon Ford joined the Company whilst at college, then University
2003	John Holmes decided to leave the funeral industry to commit more time to his other interests and pursue new ventures
2004	Craig Miller (Michael's son) joined Michael Miller & Partners
2007	Ros Miller (Michael's wife) joined Michael Miller & Partners
2007	Roger Poat & Partners was founded by Roger Poat
2011	Simon Ford left the Company to start his own furniture design Company
2013	Tony's son Matthew Mears joined the Company whilst at college, then University
2014	The Company became partners of Michael Miller with Michael continuing as Managing Director
2016	Simon Ford re-joined the Company
2016	The Company opened a new office Michael Miller & Partners in Horndean/Clanfield
2017	The Company opened a new office Ford Mears & Partners in Yateley
2019	Simon Ford appointed Director
2020	The Company acquired Michael Miller & Partners and Roger Poat & Partners
2021	With great sadness Michael Miller passes away in January
2021	Following the death of his father, Craig Miller decided to leave the Company
2021	The online FM shop for jewellery and urns is launched
2022	Ros Miller decided to leave the Company
2022	The Company acquired Brian Bentley Funeral Services of Crowthorne

WHEN DEATH OCCURS



UNEXPECTED DEATH

Report death to emergency services

The police will contact the Coroner's office to arrange collection of the deceased. This will be carried out by the contracted Funeral Director to the Coroner for that area

CORONER INFORMED

Coroner does not order further investigation and referred back to Doctors

An inquest is opened, you will need to request an interim death certificate from Coroner. Funeral papers are sent directly to allow the funeral to take place

Once inquest is completed you may purchase copies of the death certificate

Coroner does order further investigation

Is the death due to natural causes?

YES

Coroner will contact you to authorise your ability to register the death following their verdict and then issue the legal documentation for the funeral to proceed

The Registrar will register the death, issue copies of death certificates for purchase and legal documentation to the Funeral Director for the required cremation

WHEN DEATH OCCURS

We are always happy to help you with any queries. For support 24 hours a day, please contact us

In the event of a loss, please see our useful information pages relating to different scenarios. For instance, an expected death at home, in a nursing home or hospital, or a sudden death.

There are 3 things you must do in the first few days after someone dies.

1. Recieve a 'Medical Cause of Death Certificate' from a GP or hospital doctor. Once you have this certificate or the doctor has emailed it to the registrar you will be able to make an appointment with the registrar.
2. Register the death within 5 days (8 days in Scotland). The green certificate required for burial or cremation will be emailed to your nominated Funeral Director by the registrars.
3. Arrange the funeral. If you wish to see us before you have either the Medical Cause of Death or the Green Certificate, you are very welcome to. Please contact us to make an appointment.



AT HOME

You don't need to deal with the will, money and property straight away.

If the death was expected, the GP will be able to complete the Medical Cause of Death Certificate. The Registrar will require this certificate when you or a nominated representative register the death.

If you know at the time that the funeral is to be a cremation, it would be helpful to notify the GP. If you require a cremation, the doctor will need to complete a separate form for the crematorium. For this service, doctor will require a fee; which we will pay on your behalf.

If a decision has not been made at that time, don't worry. We will notify the GP and arrange for the doctors to visit our premises to complete the cremation forms in due course. Once the GP has certified death, you should contact our office to arrange a convenient time for us to bring the deceased to our Chapel of Rest. All deaths are required by law to be registered.



IN A NURSING HOME

If the death occurs in a Nursing Home, the nursing staff will contact the GP. They will also contact the next of kin to inform them of the death. If this is you, they will ask if you have a preference regarding a Funeral Director.

If our services are required, the nursing staff or you should contact our office to arrange for the deceased to be taken to our Chapel of Rest. If you know at this time that the funeral is to be a cremation, please let the nursing staff know. They will inform the doctor, who will need to complete a separate form for the crematorium. For this service, the doctor will require a fee, which we will pay on your behalf.

In some cases, the Medical Cause of Death Certificate may be left with the nursing staff for you to collect. The Registrar will require this certificate when you or a nominated representative register the death. When convenient, please contact us for an appointment to make the funeral arrangements. All deaths are required by law to be registered.



IN HOSPITAL

If the death occurs in a hospital, the nursing staff will contact the next of kin to inform them of the death. If this is you, you will be asked to visit the hospital and meet the Bereavement Officer. The Bereavement Officer will email you the Medical Cause of Death Certificate. This will be required by you or a nominated representative when the death is registered.

The Bereavement Officer may also give you a Mortuary Release Form. This will be required by us when we attend the hospital to bring the deceased to our Chapel of Rest.

If you know at the time that the funeral is to be a cremation, please let the Bereavement Officer know. The Officer will then arrange for doctor to complete additional medical forms for the crematorium. A fee is required by the doctor for this, which we will pay on your behalf.

When convenient, please contact us for an appointment to discuss funeral arrangements. All deaths are required by law to be registered.





SUDDEN DEATH & CORONER

If the death occurs at home and is sudden or unexpected, contact the doctor who will visit and confirm the death. The doctor will then contact the Coroner, who will need to investigate the death and may request a post-mortem examination. A Police Officer will attend on behalf of the Coroner, and the duty Funeral Director will be called.

Please note that the duty Funeral Director will be acting on behalf of the Coroner at such a time. The final choice of a Funeral Director to carry out the funeral arrangements is yours. If you would like us to carry out the funeral, please contact us to discuss.

In due course, a Coroner's Officer will contact you to explain the Coroner's procedures. He/she will also need to know if the funeral is to be a burial or a cremation and the name of the Funeral Director who will be making and carrying out the funeral arrangements. This will enable the Coroner to issue the correct certificates for the funeral to proceed.

If the death is due to a road traffic or other accident, the police will arrange for the deceased to be taken to the Coroner's mortuary. The Coroner and the Police will need to investigate the death under such circumstances, and a Coroner's Officer or Police Officer will explain the procedures and keep you informed.

Although the funeral arrangements cannot be confirmed until the coroner and/or the police have completed their initial investigations, there is nothing prohibiting you from contacting our office to start making provisional arrangements. All deaths are required by law to be registered.

REGISTRATION

All deaths are required by law to be registered in the sub-district where they occur. The doctor who certified death will issue a Medical Cause of Death Certificate, and email this to the Registrar. Once they have the Medical Cause of Death the next of kin or a nominated representative, will then be able to make an appointment with the registrar.

Registration must be completed as a matter of urgency, usually within five days of the death. However, this may vary if the Coroner is involved.

The Registrar's office must be called in advance to make an appointment. The contact details for the Registrar will usually be printed on the envelope containing the Medical Cause of Death Certificate. Alternatively please look at page 35.



Those eligible to register the death are:

- A relative or civil partner of the deceased
- The person responsible for paying the funeral account
- An Executor of the Will of the deceased
- The Matron / Governor of an institution where the deceased resided or died

At the Registrar's office, the following information will be required:

- Date and place of birth and death of the deceased (Birth Certificate)
- Full name of the deceased
- Marital status of the deceased
- The last occupation of the deceased
- If the deceased was female and married, her maiden name and her husband's full name and occupation, if any
- If the deceased was married at the time of death, the date of birth of the surviving partner (Marriage Certificate)

Certificates that may be issued by the Registrar:

- Registrar's Certificate for burial or cremation (a green form) which will be required by the Funeral Director (not required for Cremation if the Coroner has been involved)
- Certified Copy of an Entry in the Register of Deaths. Additional copies may be required by each bank or insurance company. A fee is payable for each additional copy.
- Certificate of Registration (this certificate is needed to claim benefits or if the deceased is in receipt of benefits and/or a pension)



REGISTRATION INVOLVING THE CORONER

If the Coroner is involved in investigating the death, registration cannot take place until after he/she has completed their initial investigations. There are a number of scenarios that may occur with the involvement of the Coroner, and each has a different procedure for registration:

1. If the deceased's GP is uncertain whether he/she can issue the Medical Cause of Death Certificate, they will contact the Coroner and explain the circumstances leading up to the death, and the Coroner will make a decision on those facts as to whether he/she needs to investigate further. If the Coroner is happy with the circumstances of the death, he/she will order the GP to proceed as normal and to issue the Medical Certificate of Cause of Death, and registration will proceed as normal. If the doctor who attends is a locum or not the deceased's normal doctor, they may refer the death to the Coroner and the death in the initial stages will be treated as sudden or unexpected. The Coroner may later decide that the deceased's own GP can proceed in the normal way.
2. If the Coroner decides he/she needs to investigate the death, he/she will order a post-mortem to be performed.
3. If the results of the post-mortem are that the death was due to natural causes, he/she will allow the deceased to be released into the care of the Funeral Director. If the funeral is to be a cremation, he/she will issue the Coroner's Certificate for Cremation, which will replace the green Registrar's Certificate for Burial or Cremation issued by the Registrar in normal circumstances. If the funeral is to be a burial, he/she will issue a certificate direct to the Registrar and you will be required to attend and register the death in the normal way. No Medical Cause of Death Certificate is required.
4. If, after a post-mortem, the Coroner orders an inquest, he/she will not issue any certificates until after the inquest has been opened and adjourned. After the opening of the inquest the Coroner may issue a Coroner's Certificate for Cremation or a Coroner's Burial Order. You will not be able to register the death until after the inquest has been heard in full. The Coroner's Officer will explain at the time what procedure is being followed.

FUNERALS

For many years we have been privileged to provide a caring, professional service to help clients in our local communities in times of need. We know that bereavement is a difficult time for any family, and that's why we provide a caring and personal service, 24 hours a day, 365 days a year.

At this difficult time, we are here to assist you in every way possible, from arranging the funeral to guidance regarding formalities and legal requirements.

We pride ourselves on offering a wide range of traditional and modern funeral options so that you can tailor the service to your exact requirements. We know that arranging a funeral is a very personal time and our professional Funeral Arrangers and Directors will help guide you through this process to help you design a service that meets your requirements.

If you would like to talk to us, please contact us



As a successful Independent Funeral Directors, we can facilitate and accommodate most people's requirements to exceptionally high standards.

Funeral options we offer include:

- Burials
- Cremations
- Religious services
- Non-religious services
- Attended services
- Non-attended services

Each of these can be arranged to suit your individual needs. To discuss your requirements with our experienced staff, please contact us.



ARRANGING A FUNERAL



Arranging a funeral can be an overwhelming task at a time when you may not be thinking clearly. We can provide you with practical and emotional support during this difficult time.

Once you are ready to start making the funeral arrangements we are here to help. We would always recommend that this is done in person where possible, either at one of our offices or at your home; whatever is most convenient for you.

To make an appointment, please contact us.

Our Austin Princess Limousine & Hearse



FUNERAL OPTIONS

The final cost of the funeral and our services will depend on the funeral arrangements chosen. Prior to the funeral we will provide you with a detailed written estimate of all our charges, along with a written confirmation of the funeral arrangements.

The estimate of charges will also include a breakdown of the disbursements which we pay on your behalf. Third party fees typically include the Crematorium, Cemetery or Churchyard, Doctor's Fees (if applicable) and a Minister or Celebrant who takes the service.

The different options we offer are an unattended Direct Cremation, or a few options with an attended service with our Simple, Classic and our Tailored Funerals which is the preferred option for the majority of our clients.



FUNERAL OPTIONS

DIRECT

UNATTENDED FUNERAL

- In hours transfer into our care by trained funeral professionals. (within 10 miles, Monday-Friday, 08.30-17.00)
- Office appointment with your local funeral director for completion of paperwork.
- A plain coffin for cremation.
- Cremated remains may be scattered in the grounds of the crematorium unwitnessed or to be collected in-person from our office within 7 days.
- Cremation will be held at a crematorium of our choice.
- Transfer to a crematorium in a suitable vehicle on a day and time of our choice.

Excluded from this service:

- No embalming or viewing of the deceased or use of our Chapel of Rest.
- No funeral procession, minister/officiant, mourners attendance or Funeral service.
- No additions available with this option.

Additional Funeral Director's fees:

- Out of hours removal, an additional.

PLEASE BE AWARE THERE IS STRICTLY NO ATTENDANCE AT THIS SERVICE.

(Total price inclusive of disbursements, full payment MUST be made at time of arrangement)



FUNERAL OPTIONS

SIMPLE

ATTENDED FUNERAL

- In hours transfer into our care by trained funeral professionals. (within 10 miles, Monday-Friday, 08.30-17.00).
- Day, date and time of the funeral will be chosen to suit ourselves. No changes or additions can be made. Typically this would be near to either 10.00 or 15.30 Mon-Fri.
- We will make all necessary arrangements for the funeral to take place.
- 24hr professional Funeral Director telephone service.
- Hearse only to the nearest crematorium or graveside service.
- Provision of staff for the funeral, including a conductor and bearers.
- We supply a simple coffin for cremation or burial.
- Cremated remains may be scattered in the grounds of the crematorium or to be collected in person from our office within 7 days.

Excluded from this service:

- No embalming or viewing of the deceased or use of our Chapel of Rest.
- No additions available with this option.

Additional Funeral Director's fees:

- Out of hours removal, an additional.

Price does not include disbursements:

- Crematorium, Cemetery and Church/Venue fees.
- Minister/ Officiant.
- Doctors' fee.

(Total price inclusive of disbursements, full payment
MUST be made at time of arrangement)



FUNERAL OPTIONS

CLASSIC

ATTENDED SERVICE

- In hours transfer into our care by trained funeral professionals. (Mon-Fri, 08.30-17.00).
- Flexibility on day and time (Subject to the availability of crematorium/cemetery).
- 24hr professional Funeral Director telephone service.
- Chapel of Rest available during our working hours (Mon-Fri, 08.30-17.00).
- Choice of a Grayswood or Cambridge coffin.
- Hearse via home or local place of your choice (if appropriate).
- The collection and listing donations on your behalf.
- Preparation of the deceased.
- Assistance with the arrangement of press notices and service sheets (additional fees).
- Advice on local venues and florists.

Additional Funeral Director's fees:

- Out of hours removal, an additional.
- Deceased being dressed in own clothes, an additional.
- Limousine(s) (max 6 people each) available on request, an additional.
- Attendance at Church/Chapel prior to Cemetery or Cremation.

Price does not include disbursements:

- Crematorium, Cemetery and Church/Venue fee Minister/ Officiant.
- Doctors' fee.

(A 50% deposit or full disbursements to be paid prior to the funeral, which ever is the greatest)



FUNERAL OPTIONS

TAILORED

ATTENDED FUNERAL

- In hours transfer into our care by trained funeral professionals. (Mon-Fri, 08.30-17.00).
- Flexibility on day and time (Depending on availability with crematorium or cemetery).
- 24hr professional Funeral Director telephone service.
- Chapel of Rest available 7 days a week 24hrs a day by appointment.
- A wide selection of Traditional, Natural or Bespoke coffins available at grouped prices.
- A complimentary Limousine(s) (max 6 people each) available.
- Procession of vehicles to suit the families wishes.
- The collection and listing donations on your behalf.
- Preparation of the deceased, to include being dressed in their own clothes.
- Assistance with the arrangement of press notices and service sheets (additional fees).
- Advice on local venues and florists.

Additional Funeral Director's fees:

- Out of hours removal, an additional.
- Additional limousine(s) (max 6 people each).
- Attendance at Church/Chapel prior to Cemetery or Cremation.

Price does not include disbursements:

- Crematorium, Cemetery and Church/Venue fee
- Minister/ Officiant from.
- Doctors' fee.

(A 50% deposit or full disbursements to be paid prior to the funeral, which ever is the greatest)





Green Funerals is part of the Ford Mears Group offering the most environmentally friendly Funeral Service within the UK, whilst upholding our normal high standards of care and professional service to our local community. We are also able to extend this service to families looking for a Green Funeral Service, who may not be local to one of our offices. Our aim is to deliver the greenest options available to suit a family's needs.



The package offered below is the greenest service we are able to recommend. This includes our professional services, care, and preparation of the deceased, in hours collection within 50 miles of our office, use of our New Fully Electric Hearse and an English grown and handmade Somerset Willow coffin. We can also recommend various natural burial sites. However, some of these options may not suit everyone's wishes so we are able to tailor the Green Funeral Service to suit individual needs.

Whilst we are not yet able to offer an eco-limousine, all our traditional funeral vehicles are euro 6 compliant and have stop-start technology to reduce our emissions. Green Funerals will always strive to be as green as practically possible.



FINANCIAL ASSISTANCE

Need help with the cost of a funeral?

If you have problems financing a funeral, speak to the Department of Works and Pensions (DWP) immediately. This should be done before you confirm the funeral order with us. The DWP will only fund or contribute towards the cost of a funeral if the immediate family is unable to pay for the funeral and the potential claimants and their immediate family are in receipt of certain state benefits.

The form required for making claims to the Department for Works and Pensions is SF200. This can be obtained by this link: <https://www.gov.uk/government/publications/funeral-payment-claim-form> or from any DWP office, Job Centre or Citizen's Advice Bureau.



PRE-PAID FUNERAL PLANS

ABOUT OUR PRE-PAID FUNERAL PLANS

Planning ahead for your funeral is one of the most thoughtful and caring things you can do. Some people never get round to discussing funeral wishes with their loved ones, which can lead to all sorts of worry and anxiety when the time comes.

Taking out a funeral plan is a simple and straightforward way to remove this worry, and it can provide real financial benefits too. Some of the other benefits include:

- Pre-arrange the details of your funeral and include any special wishes
- Make financial provision for your funeral
- Choose your funeral director in advance
- Ensure your family has access to expert help and advice at a difficult time

What's more, there are no complicated medical forms to complete.

Our plans cover our costs (as specified in the plan paperwork) as long as we carry out the funeral and your requirements don't change. You can also make a contribution towards third party costs, such as the cremation fees. These costs are outside of our control.

For more information, please request our funeral plans brochure.



OUR TRUSTED PLAN PROVIDER

FINANCIAL SECURITY

We aim to provide outstanding financial security for your money. All funeral plan pre-payments are held securely in individual whole of life assurance policies for your peace of mind.

Backed by a trusted, national provider.

Our funeral plans are provided by Ecclesiastical Planning Services Limited, which is part of a specialist, UK-based financial services group.

FLEXIBLE PAYMENT OPTIONS

You can choose to pay for your funeral plan by lump sum or in instalments. There is an additional cost for paying over two or more years and eligibility criteria applies.

Terms and Conditions apply to funeral plans – please ask us if you have any questions.

We are an Appointed Representative of Ecclesiastical Planning Services Limited Reg. No. 2644860, registered in England at Benefact House, 2000 Pioneer Avenue, Gloucester Business Park, Brockworth, Gloucester, GL3 4AW, UK, which is authorised and regulated by the Financial Conduct Authority. Firm Reference Number 958152. The Financial Conduct Authority regulates pre-paid funeral plans only.

MEMORIALS

Our sister company Hampshire Memorials will assist you in choosing a lasting tribute to your loved one, our range of headstones and gravestones can be personalised so that the colour, inscriptions, shape and material of the gravestone suit your specific needs. We are also able to undertake renovation works to existing memorials.

Rules and permissions required regarding the types of memorials which can be placed on a grave vary depending on the location our experts can guide you through these rules. Please contact us for further information.

For further information and help please contact our Farnborough Office from where Hampshire Memorials are based to discuss your requirements with our experienced staff.

HAMPSHIRE
MEMORIALS

www.hampshirememorials.uk

01252 543006 • office@hampshirememorials.uk
242 Farnborough Road, Farnborough, Hampshire, GU14 7JW



USEFUL CONTACTS

Surrey Registrar's Office

0300 200 1002

To book an appointment for the registration of the death.

Hampshire Registrar's Office

0845 603 5637 / 0300 555 1392

To book an appointment for the registration of the death.

Bereavement Advice Centre

0800 082 1203

www.bereavementadvice.org

Information on practical bereavement issues.

Cruse Bereavement Care

0808 808 1677

www.cruse.org.uk

The largest bereavement support charity in the uk.

Samaritans

116 123

www.samaritans.org

Available 24 hours every day.
A confidential emotional support service for anyone experiencing feelings of distress or despair for any reason, including those which could lead to suicide.

Child Death Helpline

0800 282 986 freephone

or 0808 800 6019 free for main mobile networks

www.childdeathhelpline.org.uk

A helpline for anyone of any age affected by the death of a child (from pregnancy to adulthood) in any circumstances. All calls are answered by parents who have experienced bereavement.

USEFUL CONTACTS

Government Service & Information

www.gov.uk

Government service and information all in one place - this website has lots of information and links to lots of other useful sites, including local authorities.

NHS Choices

www.nhs.uk

Information about local health services and lots of medical/health advice and information about a huge variety of conditions and much more.

HM Government - Tell Us Once

0800 085 7308

www.gov.uk

This government service will automatically notify central government departments and local council services of the death.

- Department of Work & Pensions
- HM Revenue & Customs
- The Driver & Vehicle Licensing Agency
- Local Council Services

Simplify Probate

0330 045 0223

www.simplifyprobate.co.uk

Probate experts who will help and advise you on the Grant of Probate and estates administration process.

Money Advice Service

www.moneyadviceservice.org.uk

Free impartial advice service helping people manage their money and tackle debt.





WWW.FORDMEARS.UK
